

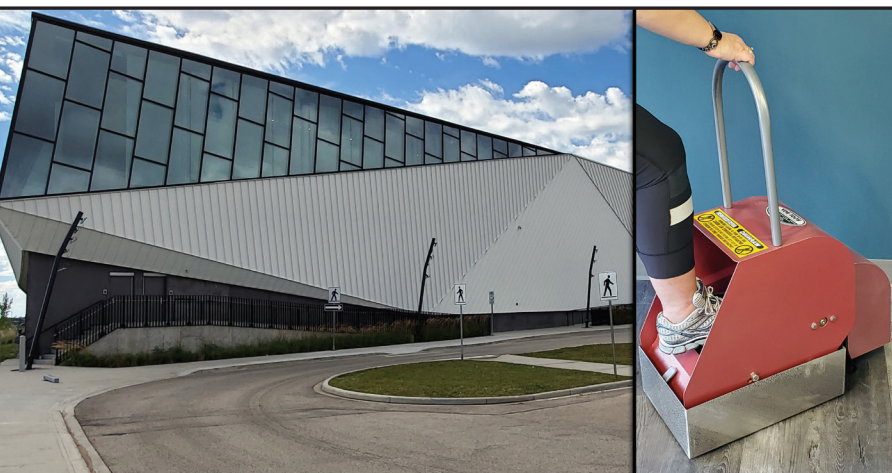


The #125 Regular Steel Frame and Waterpan is our most popular Boot-Boy model and it can be used wet or dry. There are a variety of additional models available that are equipped with Stainless Steel Frames, upgraded Waterpans and a Pull-out Tray for ease of cleaning and dry use.

The Boot-Boy can be used anywhere and everywhere including:

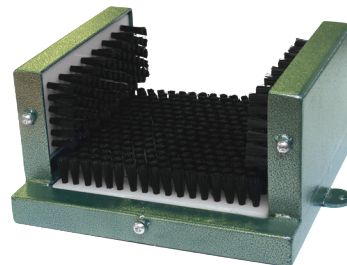
- ✓ Oil & Mining Facilities
- ✓ Health Centres
- ✓ Municipal Offices
- ✓ Apartment Complexes
- ✓ Farms
- ✓ Food Processing Plants
- ✓ Construction Sites
- ✓ Recreation Centres
- ✓ Golf Courses
- ✓ Building Entrances

GET THE MUCK OUT!



#126
Refill Brush

- Fits all models
- Long lasting nylon bristles



#126M
Manual Footwear Cleaner

- Heavy duty, easy to mount
- 10"x10"x5" (10 lbs)

ADDITIONAL INFORMATION:

CSA Approved
Made in Canada
North American and Global Parts
GFCI Plug and Power Cord
Degreasers can be added to Waterpan
220 Volt International Motor Available

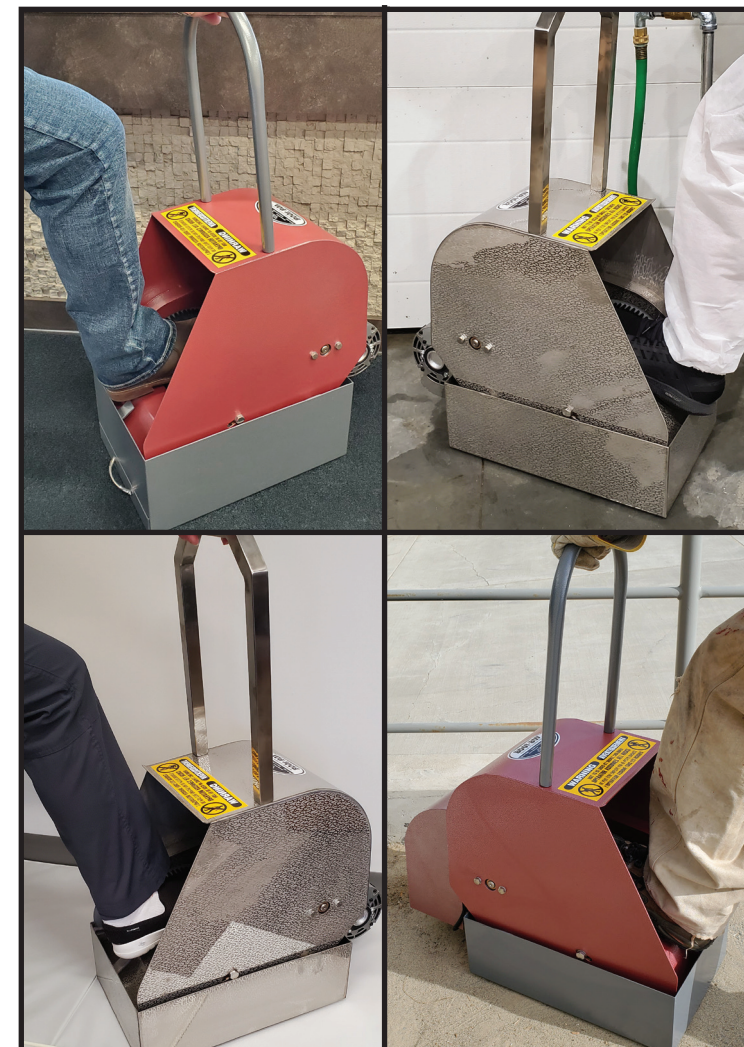
#125 STANDARD MODEL SPECIFICATIONS:

Motor: Standard 1/3 H.P. 7 amps
Total Weight: 76 lbs
Shipping Dimensions: 27"(L) x 16"(W) x 24"(H)
Assembled Length: 25" (including motor)
Assembled Width: 15"
Assembled Height: 36" (including handle)
Waterpan: 18"(L) x 12"(W) x 6"(H)

Manufactured by:

BOOT-BOY®
Industries Inc.

Phone: 780.425.8646
Email: sales@boot-boy.com
Toll-Free: 1.800.661.2492
Fax: 780.425.9555



boot-boy.com

BOOT-BOY®



STANDARD STEEL MODEL

#125
Regular Steel Frame
& Waterpan



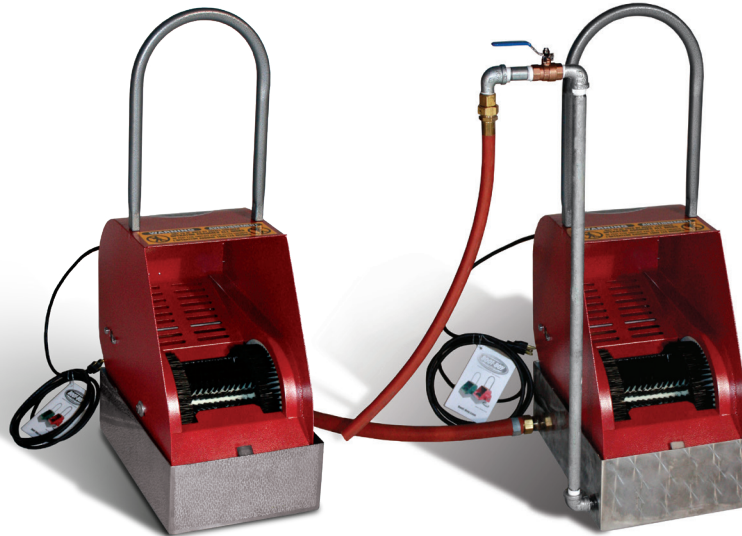
- ✓ Easy to Assemble
- ✓ Plugs into Standard Power Outlet
- ✓ Reduces Janitorial Costs
- ✓ Decreases Floor Maintenance
- ✓ Promotes a Clean Environment
- ✓ One Year Warranty

REGULAR STEEL MODELS

GET THE MUCK OUT!



#125PT
Pull-out Tray



#125S
Stainless Steel Waterpan

#125SD
Stainless Steel Waterpan
w/Flow Drain

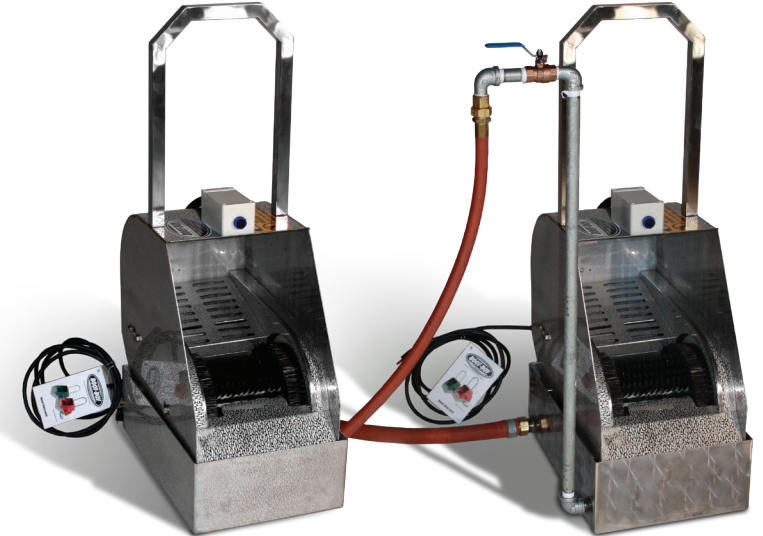
- Pull-out Tray is for dry-use only.
- Flow Drains allow for clean water in and dirty water out. Must have water and drain access.

STAINLESS STEEL MODELS



#125SA
Stainless Steel Waterpan

#125SDA
Stainless Steel w/Flow Drain



#125ULT
Stainless Steel w/Sensor
& Washdown Motor

#125ULT-D
Stainless Steel w/Flow Drain,
Sensor & Washdown Motor

- Washdown Motors can be power-washed.
- Sensors sense movement which activates the Boot-Boy.